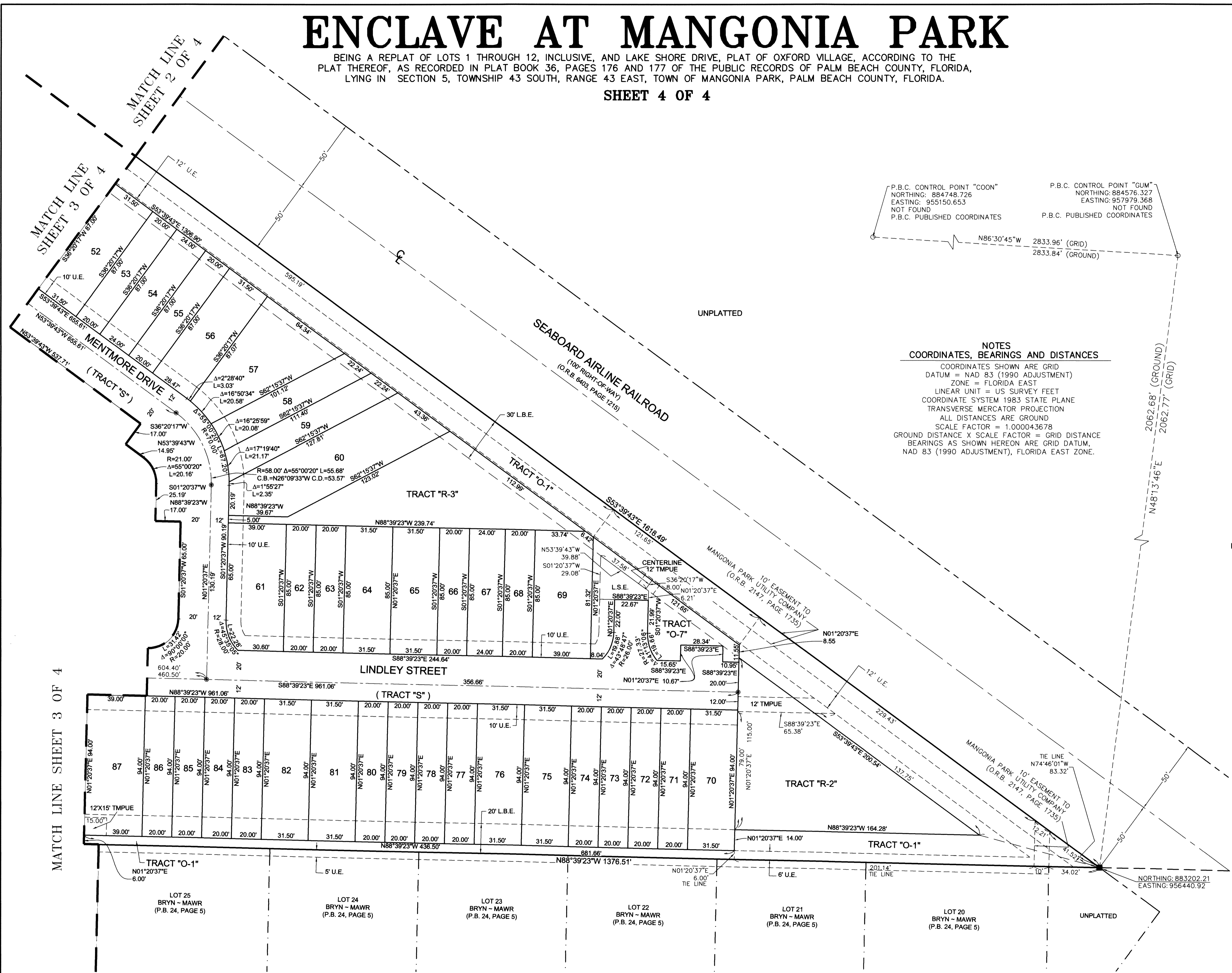


# ENCLAVE AT MANGONIA PARK

BEING A REPLAT OF LOTS 1 THROUGH 12, INCLUSIVE, AND LAKE SHORE DRIVE, PLAT OF OXFORD VILLAGE, ACCORDING TO THE PLAT THEREOF, AS RECORDED IN PLAT BOOK 36, PAGES 176 AND 177 OF THE PUBLIC RECORDS OF PALM BEACH COUNTY, FLORIDA, LYING IN SECTION 5, TOWNSHIP 43 SOUTH, RANGE 43 EAST, TOWN OF MANGONIA PARK, PALM BEACH COUNTY, FLORIDA.

SHEET 4 OF 4

103



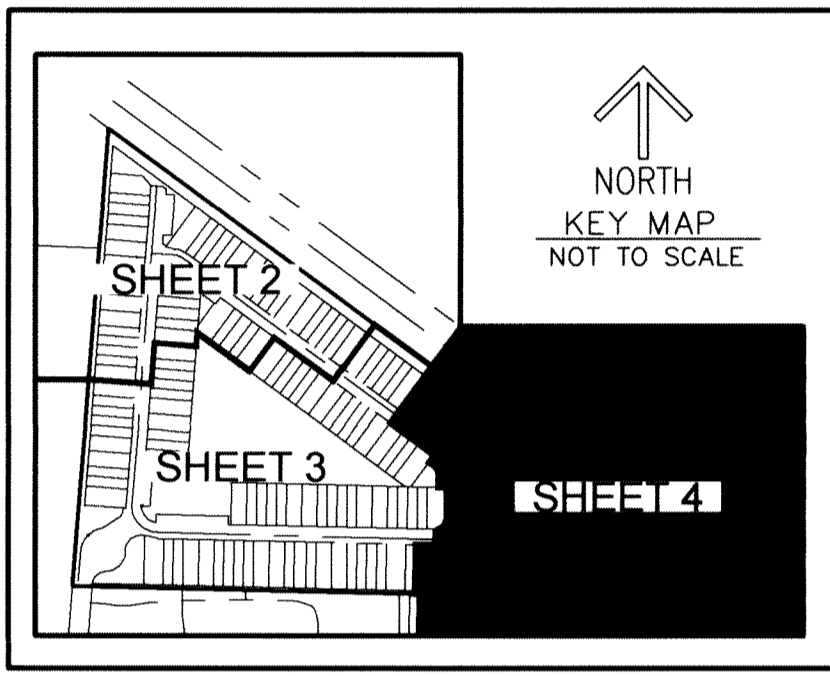
P.B.C. CONTROL POINT "COON"  
 NORTHING: 884748.726  
 EASTING: 955150.653  
 NOT FOUND  
 P.B.C. PUBLISHED COORDINATES

P.B.C. CONTROL POINT "GUM"  
 NORTHING: 884576.327  
 EASTING: 957979.368  
 NOT FOUND  
 P.B.C. PUBLISHED COORDINATES

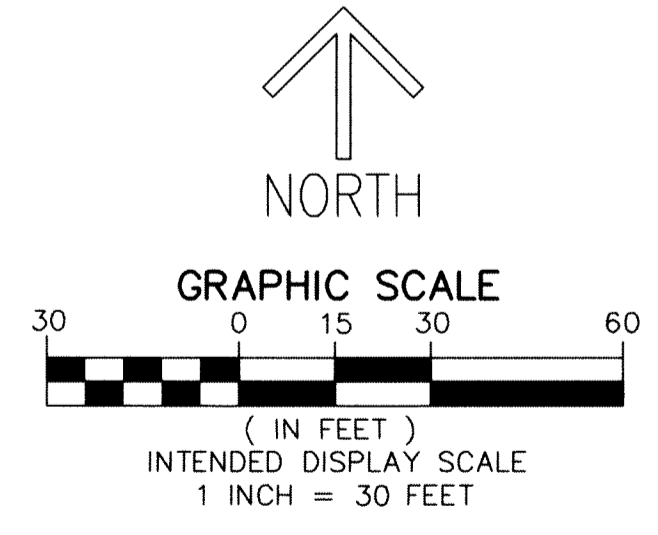
N86°30'45"W 2833.96' (GRID)  
 2833.84' (GROUND)

**NOTES**  
 COORDINATES, BEARINGS AND DISTANCES

COORDINATES SHOWN ARE GRID  
 DATUM = NAD 83 (1990 ADJUSTMENT)  
 ZONE = FLORIDA EAST  
 LINEAR UNIT = US SURVEY FEET  
 COORDINATE SYSTEM 1983 STATE PLANE  
 TRANSVERSE MERCATOR PROJECTION  
 ALL DISTANCES ARE GROUND  
 SCALE FACTOR = 1.000043678  
 GROUND DISTANCE X SCALE FACTOR = GRID DISTANCE  
 BEARINGS AS SHOWN HEREON ARE GRID DATUM,  
 NAD 83 (1990 ADJUSTMENT), FLORIDA EAST ZONE.



- LEGEND/ABBREVIATIONS**
- PRM - DENOTES SET PERMANENT REFERENCE MONUMENT SET 4" x 4" x 24" CONCRETE MONUMENT WITH ALUMINUM DISK STAMPED "C&W PRM LB3591"
  - - INDICATES PERMANENT CONTROL POINT (PCP) STAMPED "PCP LB#3591"
  - ⊙ - CENTERLINE
  - ⊙ - CENTRAL ANGLE
  - R - RADIUS
  - L - ARC LENGTH
  - C.B. - CHORD BEARING
  - C.D. - CHORD DISTANCE
  - D.E. - DRAINAGE EASEMENT
  - U.E. - UTILITY EASEMENT
  - LB - LICENSED BUSINESS
  - L.B.E. - LANDSCAPE BUFFER EASEMENT
  - L.M.E. - LAKE MAINTENANCE EASEMENT
  - L.S.E. - LIFT STATION EASEMENT
  - NO. - NUMBER
  - N/R - NON-RADIAL
  - O.R.B. - OFFICIAL RECORD BOOK
  - P.B. - PLAT BOOK
  - R/W - RIGHT-OF-WAY
  - PRM - PERMANENT REFERENCE MONUMENT
  - PCP - PERMANENT CONTROL POINT
  - PLAT - PLAT BOOK 36, PAGE 176
  - TMPUE - TOWN OF MANGONIA PARK UTILITY EASEMENT



MATCH LINE SHEET 3 OF 4

LOT 25  
 BRYN - MAWR  
 (P.B. 24, PAGE 5)

LOT 24  
 BRYN - MAWR  
 (P.B. 24, PAGE 5)

LOT 23  
 BRYN - MAWR  
 (P.B. 24, PAGE 5)

LOT 22  
 BRYN - MAWR  
 (P.B. 24, PAGE 5)

LOT 21  
 BRYN - MAWR  
 (P.B. 24, PAGE 5)

LOT 20  
 BRYN - MAWR  
 (P.B. 24, PAGE 5)

THIS INSTRUMENT PREPARED BY  
 DAVID P. LINDLEY  
 OF  
**CAULFIELD and WHEELER, INC.**  
 SURVEYORS - ENGINEERS - PLANNERS  
 7900 GLADES ROAD, SUITE 100  
 BOCA RATON, FLORIDA 33434  
 OFFICE (561)392-1991 FAX (561)750-1452  
 CERTIFICATE OF AUTHORIZATION NO. LB 3591